



# **Alberta Human Resources and Employment (HRE)**

## **UPDATE ON ALBERTA'S REGULATORY REVIEW PROCESS AND ITS IMPACT ON MINING**

**By Don Hindy  
Director of Mines**

May 11, 2001



# Alberta HRE

---

- **Last met with WMEA in 1999.**
  - **Talked about the mines inspection program in Alberta.**
  - **Informed WMEA that a Regulatory Review Process had just begun.**
- **That review process is almost complete.**

May 11, 2001



# Alberta HRE

---

- **Intent of Today's Presentation:**
  - **To update WMEA on regulatory changes that may impact the mining sector,**
  - **Particularly, changes to the:**
    - **Mines Safety Regulations**
    - **General Safety Regulations**
    - **First Aid Regulations**

May 11, 2001



# Alberta HRE

---

- **The 1999 process:**
  - **Was driven by an mandatory 5-year regulatory review cycle, and**
  - **An intent to consolidate existing regulations into a single “Occupational Health and Safety Regulation”.**

May 11, 2001



# Alberta HRE

---

- **Existing WH&S Regulations included:**
  - **Mines Safety Regulation**
  - **General Safety Regulation**
  - **Chemical Hazards Regulation**
  - **Explosives Regulation**
  - **Noise Regulation**
  - **First Aid Regulation**
  - **Ventilation Regulation**

May 11,2001



# **Alberta HRE**

---

- **When completed, the new Occupational Health and Safety Regulation will:**
  - **Be one or two booklets.**
  - **Reduce duplication and repetition.**
  - **Reflect the latest input from stakeholders.**
  - **Be adopted sometime around Oct. 31/01.**

May 11, 2001



# Alberta HRE

---

- **To coincide with the adoption of the new OH&S Regulation, all pre-existing WH&S Regulations will be formally repealed -- including the Mines Safety Regulation.**

May 11,2001



# Alberta HRE

---

- **Regulatory changes that impact mining:**
  - **Expiry date for existing Mines Safety Regulation extended until the new OH&S Regulation has been adopted. (Approx.. Oct. 31, 2001)**

May 11, 2001





# Alberta HRE

---

- **Regulatory changes that impact mining:**
  - **Adoption of the new CSA Standard M421-00 *Use of Electricity in Mines.***  
**(Mr. Ron King will address this topic.)**

May 11, 2001



# Alberta HRE

- **In the new Regulation:**
  - **A need to inform the Director when electrical distribution systems are disconnected and abandoned.**

May 11, 2001

# Alberta HRE

- **In the new Regulation:**
  - **Certification testing of Rubber-Tired, Self-Propelled (RT-SP) mobile equipment in excess of 32,000 kg.**
  - **Periodic service brake testing of RT-SP Mobile Equipment - Units > 32,000 kg.**
    - **Only 30% of fleet brake tested each year.**
    - **Total fleet tested over 3-year period.**

May 11, 2001



# Alberta HRE

- **In the new Regulation:**
  - **Few changes to sections related to underground coal mining.**
    - **Requirement for brake testing of u/g equipment.**

**NOTE: Currently there are no underground coal mines in Alberta.**



# Alberta HRE

---

- **In general:**
  - **Adoption of some International (ISO) Standards in place of Canadian and North American Standards.**

May 11, 2001



# Alberta HRE

---

- **A requirement to have a written Health and Safety Plan:**
  - **Documented hazard assessments - with workers involved in the process.**
  - **Existing and potential hazards identified.**
  - **Identified hazards eliminated or controlled.**

May 11, 2001



# Alberta HRE

- **The H&S plan must contain:**
  - **A corporate H&S policy and statement of management commitment**
  - **Hazard assessments**
  - **Hazard elimination / control measures**
  - **Regular work site inspections**
  - **Qualifications and training of workers**
  - **Emergency response procedures**
  - **Incident investigation; and**
  - **Plan administration**

May 11,2001



# Alberta HRE

- **A section on “Working Alone” ( Which will be enforced after May 1, 2001)**
  - **Documented hazard assessments, with hazard elimination or control.**
  - **Related Employee Training.**
  - **Effective communications system.**
  - **Re-assessment as conditions change.**

May 11, 2001





# Alberta HRE

- **“Working Alone” Legislation applies to all industries in Alberta.**
- **Where employees:**
  - **Have cash and merchandise control.**
  - **Meet clients away from the base office.**
  - **Perform hazardous work.**
  - **Travel alone.**
  - **Are at risk of violence due to isolation.**

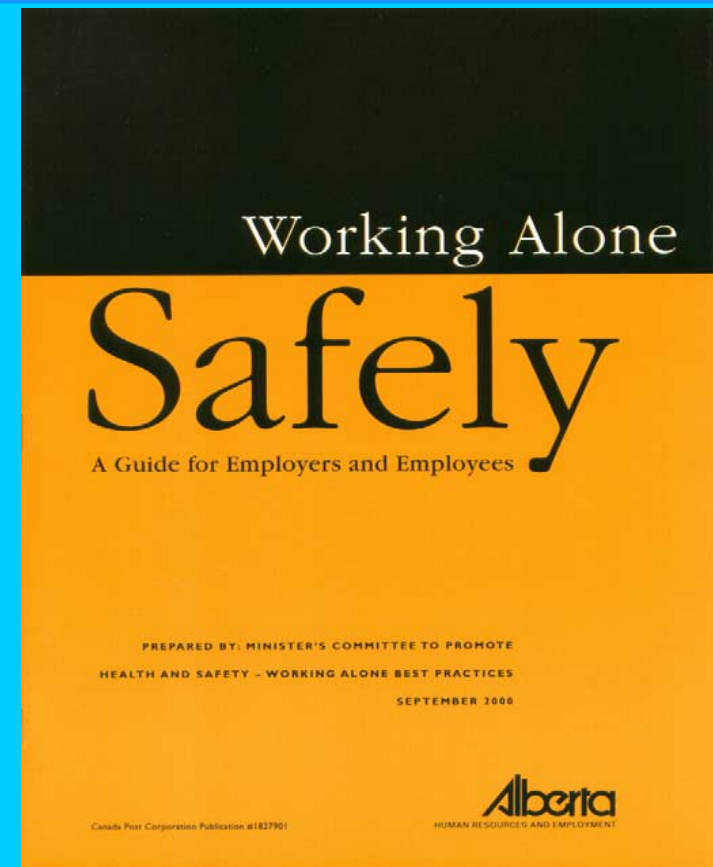
May 11, 2001

# Alberta HRE

- **Working Alone Legislation:**
  - **An Essential component is an effective means of communications - by which to summons HELP.**
  - **Does not prohibit anyone from working alone.**

# Alberta HRE

- **Guide to employers & workers**
- **Industry best practices**
- **Checklists for different situations**



May 11, 2001



# Alberta HRE

---

- **E-mail address for WH&S is [www.whs.gov.ab.ca](http://www.whs.gov.ab.ca)**
- **Phone number for WH&S is 1-866-415-8690.**

May 11, 2001



# Alberta HRE

- **In the new Regulation:**
  - **Access to first-aid records is restricted to:**
    - **Individuals requiring access for:**
      - **Medical treatment**
      - **Work site inspections**
      - **Accident and incident investigations**
      - **Evaluation of health and safety programs.**
    - **Workers' Compensation Board**

May 11, 2001



# Alberta HRE

---

- **Individuals with access to first aid records must keep the information confidential.**
- **On request, a worker may be given a copy of his own first aid records.**



# Alberta HRE

---

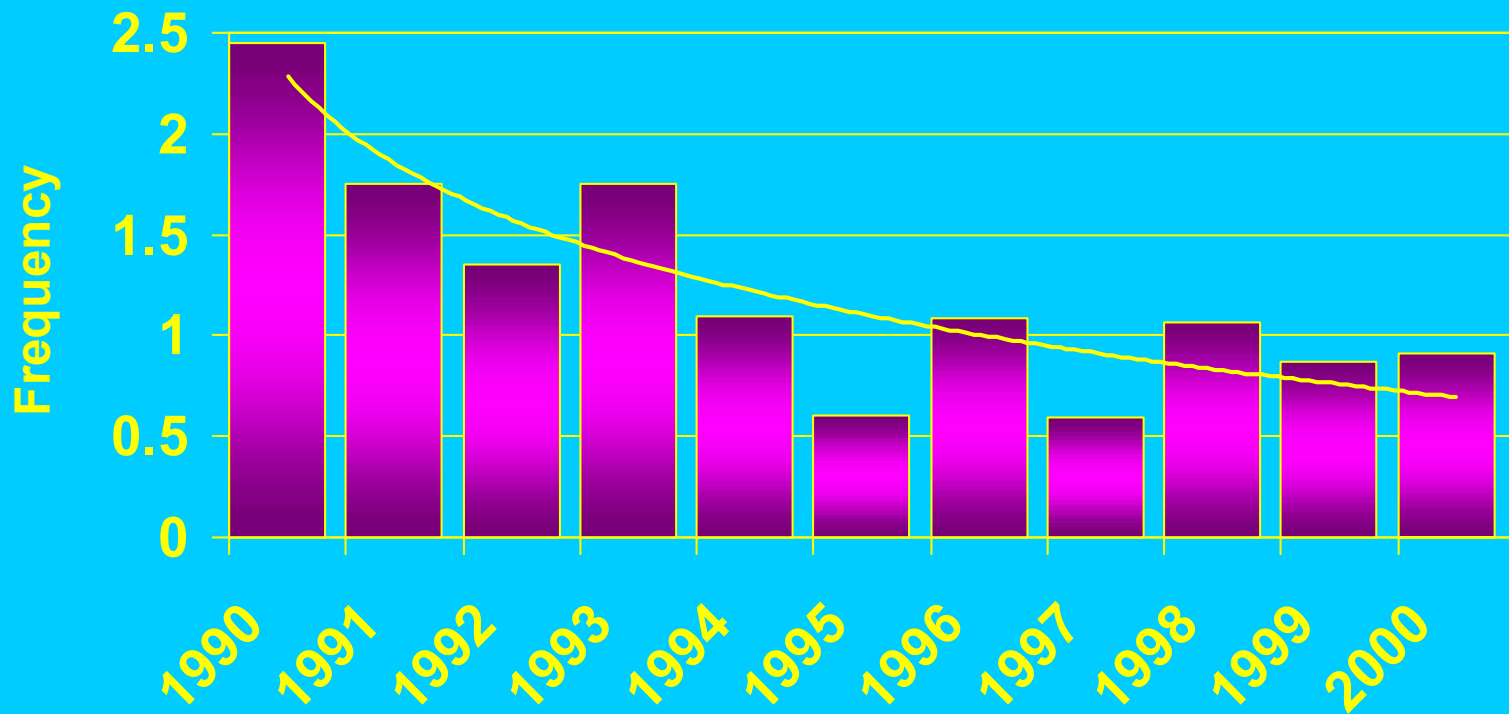
- **Other Items:**

- **An explanation document will be available for all new regulations.**
- **Standard slide presentations are being prepared for training.**
- **Inspectors will help employers understand any changes.**

May 11,2001

# Alberta HRE

## LTA Frequency - Surface Mines

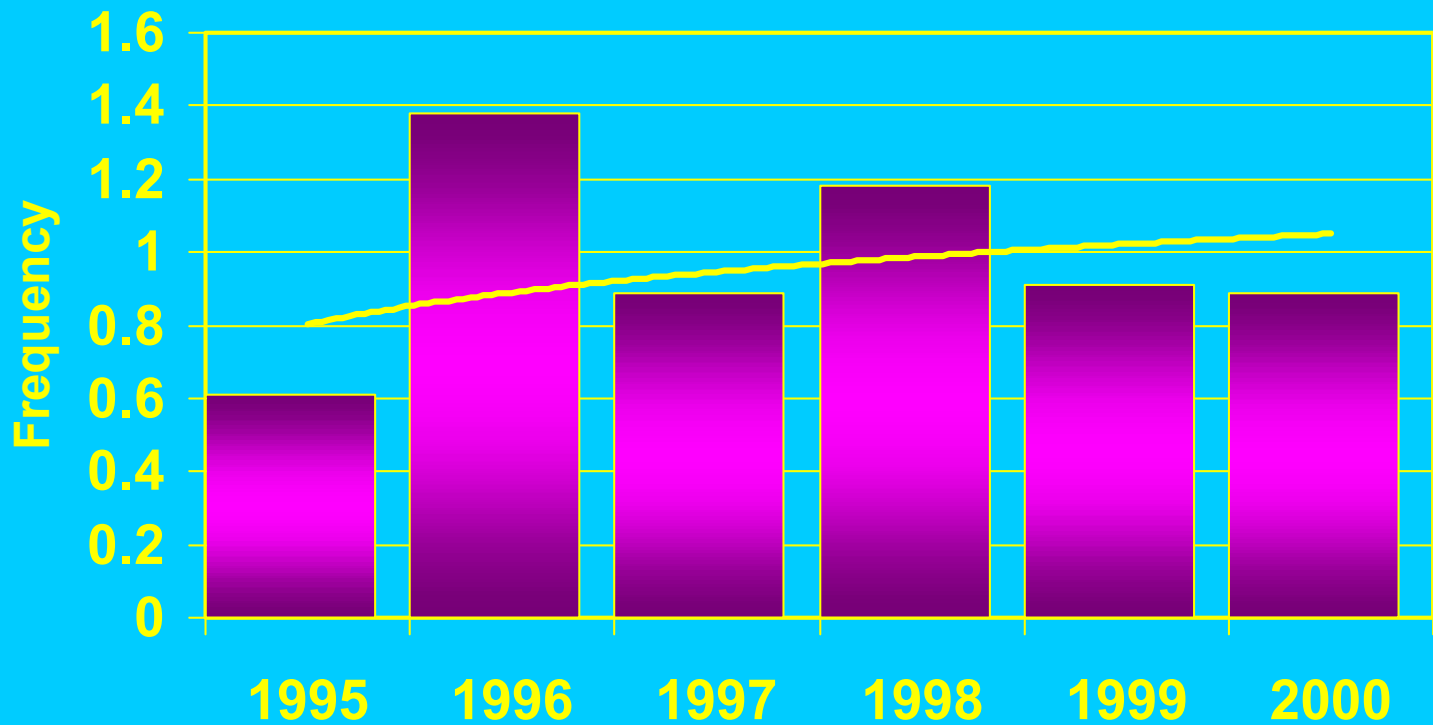


May 11, 2001



# Alberta HRE

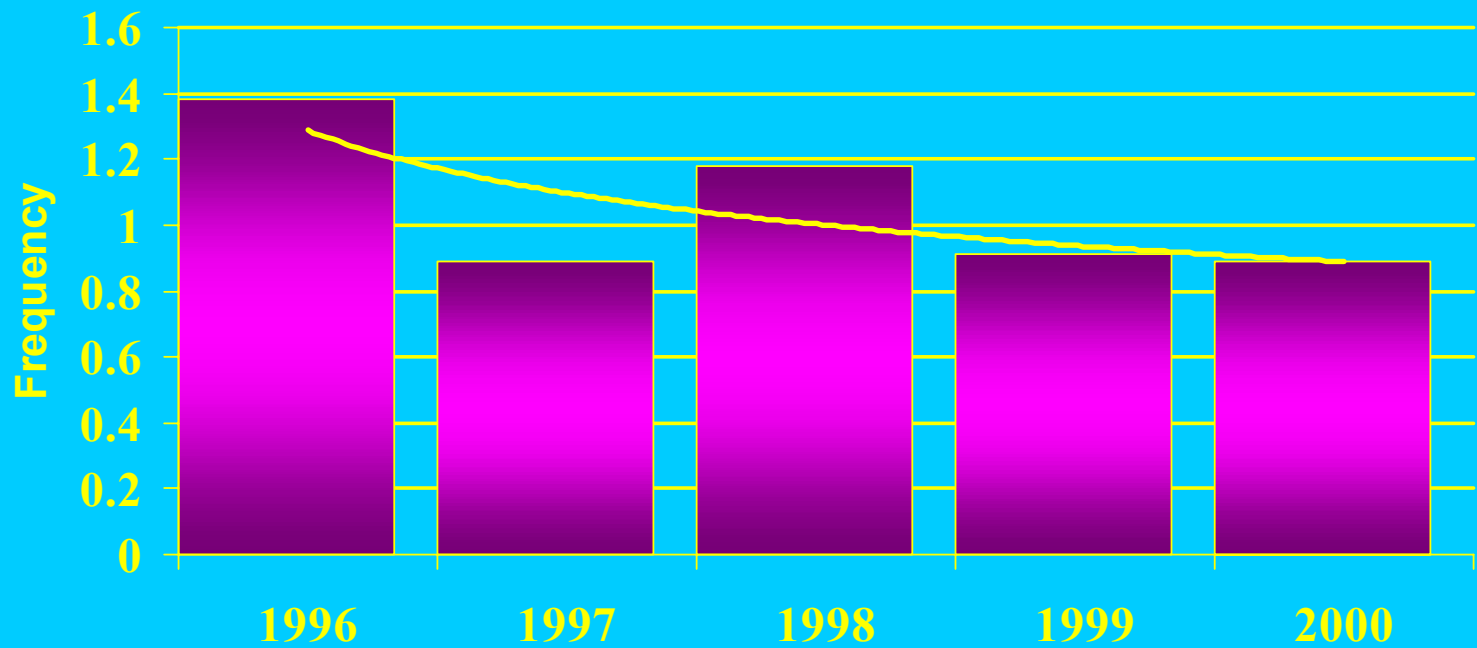
## LTA Frequency - Surface Mines



May 11, 2001

# Alberta HRE

## LTA Frequency - Surface Mines



May 11, 2001